



西筑模式的品牌服务

**Lifetime
Service**

产品全生命周期跟踪服务

实 · 现 · 使 · 用 · 者 · 与 · 制 · 造 · 者 · 共 · 同 · 价 · 值

公司地址：中国·西安经济技术开发区泾渭新城泾高南路西段8号 邮编：710200 配件服务专线：029-86966677
公司电话：029-86966888 86966889 国内销售电话：029-86966618 86966619 海外销售电话：+86 29 86966698
公司传真：029-86966668 国内销售传真：029-86966689 海外销售传真：+86 29 86966699
公司网址：www.rm.com.cn E-mail:rm@rm.com.cn 服务专线：029-86966666

道路养护设备

XRMC



中国交通建设
CHINA COMMUNICATIONS CONSTRUCTION

ROAD MAINTENANCE EQUIPMENT



XRMC 西筑



改性乳化沥青稀浆封层车
Modified Emulsified Bitumen
Slurry Sealing Machine

橡胶沥青洒布车
Rubber Asphalt
Distributor

沥青碎石同步封层车
Synchronous Macadam
Sealing Machine

冷再生混合料搅拌设备
Cold Recycling Machine

沥青路面铣刨机
Milling Machine

冷再生拌合机
Cold Recycling Mixing Plant



中交西安筑路机械有限公司
CCCC XI'AN ROAD CONSTRUCTION MACHINERY CO.,LTD.

中国交通建设股份有限公司

中国交通建设股份有限公司（以下简称中交股份）成立于2006年10月8日，是经国务院批准，由中国交通建设集团有限公司（国务院国资委监管的中央企业）整体重组改制并独家发起设立的股份有限公司，并于2006年12月15日在香港联合交易所主板挂牌上市交易，是中国第一家成功实现境外整体上市的特大型国有基建企业，股票代码为01800.HK。截至2010年末，中交股份资产总额达到3111亿元，在国务院国资委监管的120家中央企业中营业收入位列第16位，利润总额位列第18位。

中交股份作为世界500强企业，2011年排名第211位，入选“福布斯全球2000强企业”榜单，排名位列第297位，居中国内地建筑企业首位。中交股份主要从事港口、码头、航道、公路、桥梁、铁路、隧道、市政等交通基础设施建设和房地产开发业务，业务足迹遍及世界100多个国家和地区。

中交股份现已成为中国最大的港口设计及建设企业，设计承建了建国以来绝大多数沿海大中型港口码头；世界领先的公路、桥梁设计及建设企业，参与了国内众多高等级主干线公路建设；世界第一疏浚企业，拥有中国最大的疏浚船队，耙吸船总仓容量和绞吸船总装机功率均排名世界第一；全球最大的集装箱起重机制造商，集装箱起重机业务占世界市场份额的75%以上，产品出口76个国家和地区；中国最大的国际工程承包商，拥有13家骨干工程局，连年入选美国ENR世界最大225家国际承包商，CCCC、CHEC、CRBC、ZPMC品牌享誉全球；中国最大的国际设计公司，拥有13家大型设计院、7个国家级技术中心、14个省级技术中心、6个交通行业重点实验室、7个博士后科研工作站；中国铁路建设的主力军，先后参与了武合铁路、太中银铁路、哈大客专、京沪高铁、沪宁城际、石武客专、贵广铁路、兰渝铁路、湘桂铁路、宿淮铁路、成绵乐铁路、宁安铁路等多个国家重点铁路项目的设计和施工；创造诸多世界“之最”工程，苏通长江大桥、杭州湾跨海大桥、上海洋山深水港，以及正在实施的港珠澳大桥、珠海口岸人工岛等工程，均代表了世界最高水平。

站在新起点，谋求新发展，实现新跨越。中交股份始终秉承“固基修道，履方致远”的企业宗旨，肩负着打造世界一流建筑企业的光荣使命，愿与各界朋友携手共赢，创造更加辉煌灿烂的明天！



胡锦涛总书记和中交集团周纪昌董事长亲切握手

CHINA COMMUNICATIONS CONSTRUCTION COMPANY LIMITED

China Communications Construction Company Limited (hereinafter referred to as CCCC) was founded on October 8, 2006, approved by the State Council, and it was a stock limited company exclusively initiated and established by China Communications Construction Group (a central enterprise supervised by SASAC) through overall restructuring. On December 15, 2006, the company was listed in the Hong Kong Stock Exchange for transaction, as China's first large state-owned infrastructure company with successful implementation of overall listing overseas, and the stock code is 01800.HK. As of the end of 2010, CCCC's assets amounted to 311.1 billion RMB, whose revenue was ranked 16th of 120 central enterprises supervised by the SASAC, with the total profit ranked 18th.

CCCC, as a Fortune 500 company, ranking 211 in 2011, appeared in the list of "Forbes Global 2000", ranked No. 297, and it was listed first of construction enterprises in Mainland China. CCCC is mainly engaged in the construction of transportation and infrastructures such as ports, terminals, waterways, roads, bridges, railways, tunnels, municipal administration and real estate development, with its business in over 100 countries and regions throughout the world.

CCCC has become China's largest company in port design and construction, who designed and constructed the vast majority of large-medium coastal ports since the foundation of the country; the world's leading road, bridge design and construction company, have been involved in construction of numerous high-grade trunk roads; the world's first dredging company owned China's largest dredging fleet, whose total storage capacity of suction vessel and the total installed power of cutter suction vessel are ranked first in the world; the world's largest manufacturer of container cranes, has its container crane business own over 75% of the world's total market shares, with its products exported over 76 countries and regions; China's largest international engineering contractor, has 13 key projects agencies, listed in the U.S. ENR Top 225 international contractors year after year, with CCCC, CHEC, CRBC, ZPMC brand known worldwide; China's largest international design company, has 13 major design institutes, 7 national technology centers, 14 provincial-level technology centers, 6 key laboratories in transport industry, 7 post-doctoral research stations; the main force for China's railway construction, has participated in the design and construction of such key state railway projects as WuHe railway, TaiZhongYin railway, HaDa passenger line, JingHu high-speed railway, HuNing Intercity, ShiWu passenger line, GuiGuang railway, LanYu railway, XiangGui railway, SuHuai railway, ChengMianLe railway, NingAn railway and others; created a lot of the world's "largest" projects, SuTong Yangtze River Bridge, the Hangzhou Bay Bridge, Shanghai Yangshan Deepwater Port, as well as Hong Kong-Zhuhai-Macao Bridge being implemented, Zhuhai-Macao Port artificial island and other projects, which represent the world's highest level.

The Company is committed to developing the transportation infrastructure business in the PRC and abroad as well as providing its customers with high quality services and products by consistently pursuing its corporate mission of "Trustworthy service to clients, High quality returns to shareholders and Consistent out-performance".

中交西安筑路机械有限公司

中交西安筑路机械有限公司（以下简称西筑）是国内领先国际知名的专业筑养路机械研发制造企业，是我国沥青搅拌设备的领先制造商、摊铺设备的主要制造商和道路养护及再生设备的先进制造商，是“世界500强”企业中国交通建设股份有限公司（简称中交股份）的子公司，总资产近13亿元。

西筑始建于1959年，其前身“交通部西安筑路机械厂”是交通部的直属骨干企业。成立至今一直致力于道路路面机械产品的研发和制造，我国第一套强制间歇式沥青混合料搅拌设备、第一台沥青混合料摊铺机、第一台稳定土拌合机等都在这里诞生。近年来，西筑依靠三大系列产品的稳健发展，确立了在筑机行业的龙头地位，企业连续多年入围“中国机械500强”和“中国交通企业100强”。其具有国际先进水平的沥青混合料搅拌设备被评为“中国企业新纪录”、“中国公路学会科技进步二等奖”和“中国交通建设集团科技进步一等奖”，在国内高端搅拌设备市场占有率第一；多功能摊铺机系列、改性乳化沥青稀浆封层车系列、沥青路面铣刨机系列、沥青碎石同步封层车系列、冷（热）路面再生设备系列等新型高等级公路大型施工和养护的关键设备在国内处于领先水平，多次获得国家、交通部和陕西省的奖励。

西筑以客户满意度为核心，以为用户创造效益、提供产品全生命周期服务和超越客户期待为主题，依靠优质先进的产品和完善的营销网络，使产品畅销中国各省区和海外三十五个国家和地区。同时在行业率先提出并实践“产品全生命周期跟踪服务”理念，打造西筑品牌的品牌服务，产品质量和售后服务在市场中享有良好的声誉，连续多年荣获“全国用户满意的筑养路机械企业”和“全国铁路建设用户满意的工程机械企业”称号，沥青搅拌设备荣获“用户满意度第一名”。多次荣获全国售后服务“行业十佳单位”称号，产品通过了ISO9001质量认证、国际UKAS认证、俄罗斯GOST-R认证和欧盟CE认证。

西筑经过五十多年的建设和发展，积累了丰富的路面机械设计开发和成批制造经验，初步建立了科学的管理体系和完善的检测手段，培养了一大批筑养路机械设计、制造、营销和管理人才；不断以市场为导向，以科技创新为动力，加快建立企业自主知识产权和核心技术，保持了西筑的品牌优势和技术优势，已逐步发展成为我国工程机械行业市场推崇、用户首选、品牌特色鲜明、装备先进的现代化企业。

西筑将依托中交股份完善的产业链优势，凭借五十余年持续不断的创新，继续引领中国筑养路机械行业发展，不断为中国的公路建设事业提供优质产品和优良服务，开创企业辉煌的未来！

CCCC XI'AN ROAD CONSTRUCTION MACHINERY CO., LTD.

CCCC Xi'an Road Construction Machinery Co., Ltd. (hereinafter referred to as Xi'an Road Construction Company, for short as 'XRMC') is a famous manufacturer in the R&D of road construction and maintenance machinery both at home and abroad, a leading manufacturer of asphalt mixing plant in China, and a major manufacturer of paving equipment and an advanced manufacturer of road maintenance equipment. As a subsidiary of the "Fortune 500" company, China Communications Construction Company Limited (referred to as CCCC), its total assets reach nearly 1.3 billion RMB.

XRMC was founded in 1959, whose predecessor "Xi'an Road Construction Machinery Factory of the Ministry of Transport of China" was the key enterprise directly under the Ministry of Transport. Since its foundation, it has been committed to the development and manufacturing of road surface mechanical products, where China's first set of mandatory batch asphalt mixing plant, first asphalt paving machine, first stabilized soil mixing machine came out here. In recent years, based on the steady development of three series of products, XRMC has established its leading position in the construction machine building industry, listed in "China Machinery 500" and "China Top 100 Transport Enterprises" for many years. It has the international advanced asphalt mixing plant awarded with "China's Enterprise New Record", "Second



中交西筑总经理李世坤陪同原交通运输部部长李盛霖参观中交西筑产品台前合影留念

Prize of Science and Technology Progress in China Highway Society" and "First Prize of Science and Technology Progress of China Communications Construction Group", with the biggest market share in domestic high-end mixing equipment; it has the key equipments in domestic leading level for the large-scale construction and maintenance of new high-level roads, such as versatile paver series, slurry seal machine, asphalt pavement milling machine series, synchronous gravel surfacing machine, cold (hot) pavement recycling equipment series, which has won rewards of the country, the Ministry of transport, as well as Shaanxi Province for many times.

XRMC has made customer satisfaction as the core, and keep creating benefits for users, providing full life cycle service and exceeding customer expectation as the themes, relied on advanced high-quality products and perfect marketing network, and sold its products over 35 countries and regions in China and abroad. And also in the industry, it has proposed and practiced the concept of "Product Life Time Tracking Service", created the brand service of XRMC type. Its product quality and after-sales service enjoy a good reputation in the market for many years, and won the titles of "Road Construction Machinery Enterprise with National Customer Satisfaction" and "Engineering Machinery Enterprise with Customer Satisfaction of the National Railway Construction", with the asphalt mixing plant awarded "First Customer Satisfaction". The company has won the title of "Industry Top 10 Unit" in national after-sales service for many times, and its product has passed the ISO9001 quality certification, international UKAS certificate, Russian GOST-R certificate and EU CE certificate.

Through over 50 years of construction and development, XRMC has accumulated rich of experiences in road surface machinery design and development and batch manufacturing, initially established scientific management systems and perfect testing means, developed a large number of talents in road machinery design, manufacturing, marketing and management; it has continuously made market as the orientation, technology innovation as the driving force, to accelerate the establishment of independent intellectual property rights and core technology, to keep its brand and technological advantages, and it has gradually developed into a modern enterprise with distinctive brand and advanced equipment, praised by China's construction machinery industry and first chosen by users.

XRMC will rely on the advantage of complete industrial chains of CCCC and more than fifty years of continuous innovation, continue to lead the industry of China road construction machinery, and continue to provide quality products and excellent services for road construction all over the world, to create a brilliant future for the company!

Contents 目录

企业简介	P 01 02	CR2500冷再生拌合机介绍	P 21 22
ROADTEC介绍	P 03 04	CR2500冷再生拌合机参数	P 23 24
各型号铣刨机特点概述	P 05 06	CRS300冷再生混合料搅拌设备概述及参数	P 25 26
主要部件及特点详解	P 07 10	TBS350沥青碎石同步封层车介绍	P 27 28
铣刨机参数表	P 11 14	TBS350沥青碎石同步封层车参数	P 29 30
LXD120沥青路面铣刨机介绍及参数	P 15 16	XLS12 橡胶沥青洒布车介绍	P 31 32
MS9系列稀浆封层车介绍	P 17 18	XLS12 橡胶沥青洒布车参数	P 33 34
MS9系列稀浆封层车荣誉证书及参数	P 19 20		

铣刨机

Milling Machine

ROADTEC作为美国ASTEC Industries旗下一家移动式沥青设备生产商，公司生产和销售全规格的铣刨机和再生机，转料车和沥青摊铺机。在销售人员和代理商的共同努力下，产品已畅销世界各地。其所有的产品均按最高规格制造。设备特色为生产率高、操作简单、适应性强。ROADTEC已与中国最大的专业筑养路机械研发制造企业西筑联手，在中国联合生产全球先进的XRMC-ROADTEC铣刨机，为中国客户提供更专业、更人性化的道路养护设备选择。这是西筑与美国ASTEC在连续式搅拌设备技术合作后的又一次战略合作。西筑将结合中国国情，向广大客户提供具有全球顶尖技术的美国产品，服务中国公路建设和养护市场。

XRMC-ROADTEC 铣刨机属于铣刨机中高产能的道路养护设备，其有很强的竞争力，如动力强劲、双向铣刨转子等。随着公路养护愈来愈多的对环保和可持续发展的关注，XRMC-ROADTEC铣刨机在旧摊铺料回收中必将扮演愈来愈重要的角色。

XRMC-ROADTEC在市场上的优势不但来自于产品的先进性和可靠性，更以提供及时个性化的优质服务来支持和回报客户。

XRMC, the largest professional road construction machinery developer and manufacturer in China has partnered with Roadtec, Inc., a subsidiary of Astec Industries, Inc., based in the United States. Roadtec's product line includes material transfer vehicles, milling machines, cold recyclers and asphalt paving machines. Under the great effort of combined sales teams and agents, ROADTEC has gained worldwide popularity in road construction market. Roadtec manufactures all product lines with the highest grade materials, focusing on simplicity, high productivity and outstanding performance. XRMC and Roadtec jointly manufacture the most advanced milling machines that provide Chinese customers exceptional equipment choices. Based on the Chinese national condition, XRMC will provide customers with world class U.S. products to serve the Chinese road construction and maintenance markets. XRMC-ROADTEC milling machines offer high production while offering competitive features such as powerful engines, and two way milling rotors. With the increased focus on environmental protection and sustainable development, XRMC-ROADTEC milling machines will play a more important role in asphalt pavement recycling field. XRMC-ROADTEC provides advanced and highly reliable products as well as prompt and personalized customer service.





ROADTEC.铣刨机系列 RX-4000/RX-3200/RX-2000/RX-1200

美国设计、西筑制造的XRMC·ROADTEC铣刨机，特点显著，动力强大；有极好的平衡性；系统维修简单；配件均为通用件；独特的输料皮带可向两侧60度摆动；24小时客服支持。

American designed, XRMC manufactured XRMC·ROADTEC milling machine will stand out in fierce market competition due to its powerful and well balanced capability, simple troubleshooting and common spare parts requirement. Plus it offers other special features like conveyor can swing up to 60 degree to either side, the customer first 24Hrs support.

生产率高 · 使用成本低

High Productivity
Low Cost of Ownership

RX-4000

708kw卡特彼勒发动机，铣刨宽度3810mm，铣刨深度35.5cm，适用于全幅铣刨和工作量非常大的铣刨工作。

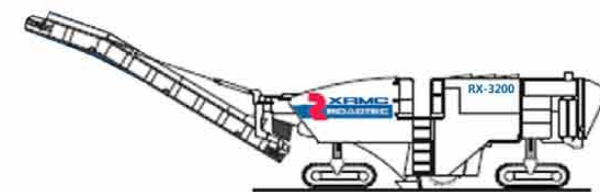
The equipped 708kw Caterpillar engine is able to let RX4000 cut up to 3810mm wide and 35.3cm deep. The machine is the best choice for full-lane and heavy milling work.



RX-3200

522kw卡特彼勒发动机，铣刨宽度3180mm，铣刨深度35.6cm，适用于半幅和工作量大的铣刨工作。

Featuring a 522kw Caterpillar engine and capable of cutting up to 3180mm wide and 35.6cm deep, the RX3200 is a good choice for finishing of half-lane work with high output.



RX-2000

470kw康明斯发动机，铣刨宽度2000mm，铣刨深度33cm，特点是重量轻，机动性好。

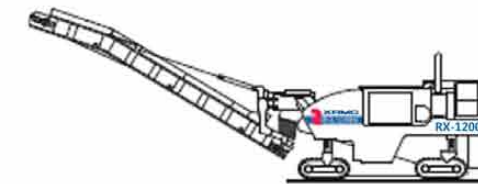
Equipped with 470kw Cummins engine, featuring high maneuverability and less weight, RX2000 can cut up to 2000mm wide and 33cm deep.



RX-1200

242kw卡特彼勒发动机，标准铣刨宽度1200mm，最大铣刨宽度1500mm，铣刨深度31cm，适用于商业用途，如路肩等道路狭窄的工程。

Using 242kw Caterpillar engine, tailor made for commercial applications and narrow projects such as road shoulders, the standard cutting width of RX1200 is 1200mm and the maximum is 1500mm. The standard cutting depth is 31cm.



强劲的发动机

发动机具有功率自动分配系统，确保发动机始终在最理想的功率和扭矩范围，更好适应各种工况施工，并且使油耗最小化，进而节约建筑工地的运行成本。

Higher horsepower engine

Engine has power self-distribution function. Engine can work in its best condition under various construction sites and cost less.

优异的主机结构

选用高强度、低合金钢结构作为主机架材料。水箱、油箱和液压油箱合理的布置在铣刨室上方，使设备整体达到工作状态的最佳平衡。

Reasonable layout

Adopting sound quality, high grade and low-alloy structure steel as main machine body material. Water tank, fuel tank and hydraulic oil tank are well distributed in the upper part of milling room which enables machine works in best condition.

高强度的铣刨室

由高强度低合金钢T-1制成。铣刨室内的衬板选用复合耐磨衬板，耐磨强度高于AR-500强度，能够有力的保证施工过程中设备的稳定性和安全性。两侧挡板可液压浮动，保证铣刨的绝对精准。

High grade and tough cutting housing

Constructed of T-1 steel and lined with replaceable, abrasion-resistant steel with much higher grade than AR-500. That provides stable performance and safe operation while machine is running. Skids at both sides can be hydraulically lifted thus ensuring accurate work performance.

通用、高效的铣刨转子

全球唯一可以安装KENNEMETAL, SOLLAMI和KEystone三家铣刨刀具的铣刨转子。可以实现上切或下切的工作方式，可以在标准铣刨以外进行就地冷再生等其他工作。配备快速更换刀具的气动工具，工地上耗时的焊接及打磨工序已成过去。

Universal high efficient cutting rotary

The machine can use universal recognized high efficient cutting rotaries from KENNEMETAL, SOLLAMI and KEYSTONE. Apart from upcut and downcut, it can do cold recycling work on job site as well. Replacing of cutter using quick pneumatic device is also much easier than commonly used and out of date welding and grinding.



精心设计的可调挡板

前后挡板采用经优化设计的10°偏角，以最大程度减少铣刨刀头磨损，后门挡板可液压垂直升降到任意位置，预留足够的维修空间。同时具有液压加载和减载功能，始终保证铣刨室具有最佳收料效果。前挡板可以按标高液压浮动，也可固定在一个位置，实现破碎功能。

Well designed adjustable moldboard

Both the rear and front moldboard of the machine are angled in toward the drum by 10°. This allows cutter less wearing. The front moldboard can set to float with the elevation or in a fixed position. Height of the rear moldboard is fully adjustable. Raise the rear board completely to easily access the drum and cutter teeth for maintenance.

最佳布局的双喷洒系统

具有两个独立的不锈钢洒水路。前喷洒主要用于降低扬尘，后喷洒用于冷却铣刨齿以保证最大使用寿命，更好的完成铣刨任务。

Optimized layout of front and rear double spraying system

Two independent stainless steel spray systems in the cutter housing provide much better dust reduction and keep cutter tools cooler, thus extending the life of cutting teeth and better finish milling work..

灵活、高效的铣刨材料输送系统

灵活的两级前输料系统，卸料皮带高度可调，能够向左右两侧60度摆动，可有效增加与卸料车之间的工作范围 and 安全性，满足各类工地的施工要求。输料系统配有喷洒装置，可及时对皮带进行清洗，有效防止扬尘。

Flexible, high efficient conveying system

Flexible two-phase front conveying system, height of discharging belt is adjustable and can swing left or right 60 degrees. This allows the machine to keep safe distance with truck. Spraying device of conveying system help clean belt and reduces dust.

灵活、精准的行走系统

行走采用液压驱动。液压驱动的四条聚氨酯行走履带，可实现仅前轮转向、仅后轮转向、前后配合转向和蟹行方式。配有液压差速锁，可以实现完美的原地转向。装有前后履带自动对齐装置，可确保直线行走的精确度。

Swift and precise traveling system

Fully hydraulic driven traveling system. Four crawlers are made of polyurethane allow respective front and rear wheels direction changing. Front wheels can accompany rear ones for direction changing and crab type traveling.



独特的转向系统设计

前支腿采用顶部转向机构。该转向机构位于前左右支腿顶部，方便用户进行维护保养，同时也为一级皮带保养和更换提供了更大的空间。

Special turning design system

The front legtube is fixed with top turning device locating on top of front left and right legtubes which provides easy access to maintain and replace of fist belt.



简洁、清晰的多功能操作平台

根据人机工程原理设计的左右对称式操作台，所有操作手柄和开关，均按功能及使用频率，分组布置，使操作手可以随时掌控设备。控制面板的清晰设计，使操作手能够全身心的集中精力于操作。

Simple, clear and functional operator platform

The human oriented operator platform is conveniently accessed from the right side to left side. All control handles and switches are placed according to using frequency and thus allow operator to control easily and concentratedly.



安全可靠的总成设计，使设备免于意外伤害

- 1、发动机具有紧急停车系统，可使设备免于任何形式的不必要的损害。当设备处于操作温度过高，或非正确操作情况下设备可自动停止工作。
- 2、铣刨转子遇到隐藏的不可粉碎的障碍物时，铣刨转子变速箱的联轴器可快速切断输入轴与变速箱之间的连接，有效保护发动机总成。
- 3、操作平台带有橡胶震动隔离器，可有效减少震动造成的破坏，并降低噪音。
- 4、当后铣刨室挡板完全升起时，系统自动启动安全装置，自动终止发动机，避免对施工人员可能造成的伤害。

Safe and sound assembly design

1. Emergency stop system of engine avoids unnecessary engine damage. It allows engine to switch off automatically when equipment is too hot or under abnormal operation.
2. If cutter rotary strikes a buried obstruction that would damage engine, shear coupling of cutter rotary gear box will separate the input shaft from the gear box to protect engine.
3. Rubber vibration isolators eliminate destructive vibration help the machine much quieter.
4. When the rear cutter housing skid fully lift up, the operation system will switch on protection device and power off engine to avoid damage to workers.



方便快捷的保养，使日常工作量和成本最小化

- 1、配备集中润滑系统，人工注油的润滑时代已经过去。本系统可以对全机59处进行自动润滑，使铣刨施工工作得以持续进行。
- 2、设备所配备的动力包，在停机后可方便的一键开启，可任意提升后挡板，快速更换刀具。
- 3、清洗水管缠绕于设备前端的卷盘中，配备高压水枪，打开阀门即可清洗机身，便于设备日常保养，使设备焕然一新。
- 4、三个不同位置的注水口，可方便快捷的为设备蓄水，保证施工的连续性。
- 5、液压升降发动机机舱罩壳，提供足够大的维修空间，使维修和保养工作变得舒适、快捷。

Convenient maintenance, less cost

1. Manual mode of lubrication is out of date. Central lubrication system provides auto lubrication to 59 points of the machine, thus let it work continuously.
2. All power packs of the machine can be switched on by one button easily. The rear skid can be lifted flexibly and cutter can be replaced quickly.
3. The standard high pressure washdown system helps to keep the machine looking and running new. And it also makes routine maintenance much easier.
4. Three different water injection points allow easier water recharging and work continuously.
5. Hydraulic lifting engine cabin cover offers much more maintenance space. Repairing and maintenance is simple and fast.



铣刨机施工现场



RX-2000铣刨机详细参数

最大铣刨宽度 (Max Cutting Width)		2,010mm	
最大铣刨深度 (Max Cutting Depth)		330mm	
发动机 (Engine)		美国康明斯 (CUMMINS)	
制造商	(Manufacturer)	QSX-15	
型号	(Model)	水冷 (Water Cooled)	
冷却方式	(Cooling Method)	6	
汽缸数	(Cylinder No.)	470kw	
额定功率	(Rated Power)	2,100rpm	
发动机转速	(Engine Speed)	15L	
排量	(Emission)	EPA TierIII	
排放标准	(Emission Standard)		
铣刨转子 (Cutter Rotary)		168	
刀具数	(Cutter No.)	16	
刀间距	(Cutter Distance)	1,118mm	
转子直径 (含刀具)	(Rotary Diameter (including Cutter))		
材料输送系统 (Material Transmission System)		813mm	
收料皮带宽度	(Collecting Belt Width)	813mm	
卸料皮带宽度	(Discharging Belt Width)	335mm	
皮带输送能力	(Belt Transmission Capacity)		
行走驱动 (Traveling Driven)		0-5.1km/h	
行走速度	(Traveling Speed)	0-31m/min (0-46 m/min)	
工作速度	(Work Speed)	支腿上方转向 (Turning at upper part of legtube)	
前支腿转向方式	(Front Legtube Turning Method)		
履带 (Crawler)		履带规格 (L×W×H) (Overall Dimensions)	
		1,720×305×610mm	
液压系统 (Heraldic System)		主要液压件 (Key Parts)	
		美国Sauer	
箱体容量 (Tank Capacity)		水箱 (Water Tank)	
		2,271L	
		燃油箱 (Fuel Tank)	
		1,100L	
		液压油箱 (Hydraulic Oil Tank)	
		318L	
铣刨设备重量 (Cold Planer Weight)		26,000kg	
最大工作重量 (Max Work Weight)		30,000kg	
运输尺寸 (Transportation Dimensions)		工作长度 (Work Length)	
		13,820mm	
		宽 度 (Width)	
		2,340mm	
		装船高度 (Shipping Height)	
		2,590mm	
特殊配置 (Special Devices)		集中润滑装置 (Central Lubrication Device)	
		对设备59个点进行集中润滑。 (Central lubrication on 59 points)	
		气动工具 (Pneumatic Tools)	
		可以快速更换和安装铣刨刀头。 (Cutter head fast replacing and installation)	
		工作包 (Work Kit)	
		在停机的状态下可对铣刨鼓进行操作和控制。 (Cutter drum can de operated while machine stops working)	
		玻璃钢遮阳篷 (Fiber Reinforced Plastics Sun Shield)	
		设备开机前可依靠动力包液压升降。 (Power packs hydraulic driven even before machine starts working)	
		座椅 (Seat)	
		座椅可左右自由移动。 (Sliding to both left and right sides)	

可选件

Choose from These Options and More

除以下可选件外，我们还可以根据客户的要求，进行非标设计。

In addition to the options below, we also offer specialized customization depending on your needs. Let us know the requirements of your special application, so we may propose a solution for you.

RX-1200型铣刨机

RX-1200 cold planer

325 hp/ 242 kw



RX-2000型铣刨机

RX-2000 cold planer

630 hp/470 kw



RX-3200型铣刨机

RX-3200 cold planer

700 hp/522 kw



RX-4000型铣刨机

RX-4000 cold planer

950 hp/ 708 kw



辅助动力

3.5kw 50hz 连续供液压发电机

15kw 50hz 连续供液压发电机

AUXILIARY POWER

3.5kw 50hz Continuous Duty Hydraulic Generator

15kw 50hz Continuous Duty Hydraulic Generator

附加照明（需要发电机）

夜间工作包-包括500W，120V灯带支架和固定件

ADDITIONAL LIGHTING (GENERATOR REQUIRED)

Night Work Package – Includes four 500W, 120V lights (brackets and mounting hardware)

坡度和斜坡控制

水平，机械坡度控制，双控制

数字式坡度斜坡控制，操作手和地面人员都可以控制

数字基准系统， 传统的地面控制双控制盒

GRADE AND SLOPE CONTROL

Roadtec Hydro-Mechanical Grade Control. Dual Controls.

Roadtec SmoothMill™ Digital Grade and Slope Control System for operator and ground man

Digital Base System. Traditional Dual Control Boxes for ground man.Topcon Automation.

拌合系统

KENNEMETAL, SOLLAMI, KEYSTONE 或者SANDVIK 系统。

微型铣刨鼓

RX-1200, RX-2000, RX-3200可调铣刨刀具系统

CUTTER SYSTEMS

Kennametal, Sollami, Keystone, and Sandvik Systems available. See table below.

Profiling or Micro-Milling Drums

VCS Variable Cutter Systems for RX-1000, RX-2000, RX-3200

现场冷再生

双向操作系统的双控制（RX-1200、RX-2000不能用）

双向铣刨包

添加剂系统

COLD-IN-PLACE RECYCLING

Dual Control Package For Bi-Directional Operation (not available on RX-1200、RX-2000)

Cutter Housing Bi-Directional Package

Emulsion Additive Sytem

其它

皮带计量包，可选打印机

MISCELLANEOUS

Belt Scale Package with Optional Printer

标 准 铣 刨 鼓 宽 度 选 择					STANDARD CUTTER DRUM WIDTHS OPTIONS (custom widths can be supplied)								
	26" 66cm	36" 91cm	48" 122cm	59" 150cm	6' 3" 191cm	6' 7" 201cm	7' 2" 218cm	8'2" 249cm	10' 305cm	10' 6" 320cm	12' 366cm	12' 6" 381cm	VCS
RX-1200													
RX-2000													
RX-3200													
RX-4000													



铣削深度：0-300mm
Milling depth: 0-300mm

最大铣削宽度：1250mm
Maximum milling width: 1250mm

质量可靠，机械、液压、电控一体化
Quality reliable and
Mechanical-electrical-hydraulic integration

沥青路面铣刨机系列 LXD120 Milling Machine

概述

LXD120沥青路面铣刨机是我公司在吸收国内外同类产品先进技术的基础上，自行设计开发的高等级公路养护设备，具有完全自主知识产权。其主要特点是：整体结构布局合理、紧凑；控制精度高；性能稳定，生产率高；操作简单，维护保养方便。

Overview

LXD120 milling machine is the self-developed road maintenance equipment which is designed by considering the characteristics of the construction of Chinese road and referring to the international advanced technologies. Our company (i.e. XRMC) has the whole self-owned intellectual property. The main features of LXD120 include the compact and rational structure, high control precision, stable performance, high productivity, easy operation and convenient maintenance etc.

高性能铣刨滚筒设计

美国KENNAMETAL公司专门定做的铣削滚筒，铣削深度最大可达300mm，性能稳定，可靠性高。

High performance milling roller

The customized milling roller, the maximum milling depth stable is 300mm, is manufactured by the KENNAMETAL company of U.S.A., so the performance and reliability are stable.

强劲的发动力输出系统

采用潍柴动力股份有限公司WP10-310系列发动机，功率大，动力强劲。

The powerful driving output system of motor

The WP10-310 series motors, manufactured by Weichai Power Co.,Ltd., have the high power and powerful driving force.

合理的皮带机结构设计

卸料皮带机可折叠，转场和运输方便。合理的皮带机设计结构，提高输料能力，同时方便维护保养。

Advanced belt conveyor

The foldable unloading belt conveyor is easy to transfer and transport. with reasonable design. it has great transmission capability and it also easy to maintain .

高性能液压控制系统

采用SAUER公司液压泵及马达、进口阀组、胶管及接头等组成的液压系统，可靠性高。四轮全液压驱动，确保机器具有较强牵引力。

High performance hydraulic control system

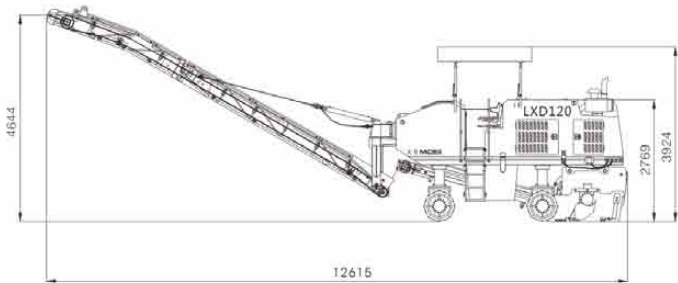
The hydraulic system is composed of the hydraulic pumps, motors, group valves, hoses and joints from SAUER company of Germany, imported hoses and the joints from Parker company, so it has the high reliability. the four-wheel full-hydraulic driving system,ensure the powerful tractive force.



LXD120

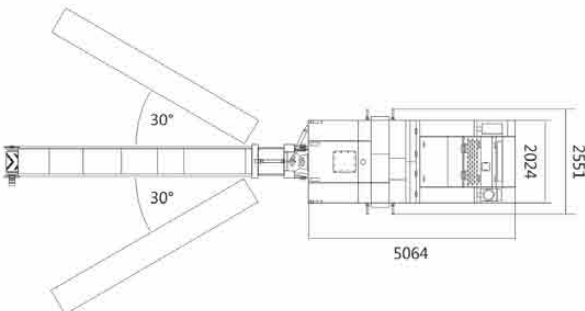
外形尺寸图 External dimensions

尺寸单位:mm
Dimensional unit : mm



作业范围图 Working range

尺寸单位:mm
Dimensional unit : mm



参数 Parameters

产品型号 Model		LXD120		
铣削宽度 Milling width	(mm)	1250	铣削深度 Milling depth	(mm) 0 ~ 300
刀具间隔 Cutter space	(mm)	15	刀具数量 Cutter number	112
冷却系统 Cooling system		水冷 Water-cooling	额定转速 Rated speed	(rpm) 2200
额定功率 Rated power	(kw)	228	行走速度 Driving speed	(km/h) 0 ~ 5
理论爬坡能力 Theoretical gradeability	(%)	60	运输重量 Transport weight	(kg) 18000
燃油箱 Fuel tank	(l)	300	液压油箱 Hydraulic oil tank	(l) 340
水箱 Water tank	(l)	1500	皮带宽度 Belt width	(mm) 500
理论输料能力 Theoretical conveying capability	(m³/h)	120	整机尺寸 Size of complete machine	(mm) 12615×2551×3924

中交西安筑路机械有限公司保留对技术改进的权利
XRMC RESERVES THE RIGHT OF TECHNOLOGICAL IMPROVEMENTS



微表处施工，高品质
Microsurfacing construction, high quality

改性乳化沥青稀浆封层，高性能
Slurry sealing of modified emulsified Bitumen, Perfect performance

粘层施工，高效率
Claypan construction, high efficiency

改性乳化沥青稀浆封层车系列 MS9/MS9B/MS9J/MS12

Modified Emulsified Bitumen Slurry Sealing Machine

概述

MS9系列稀浆封层车是中交西安筑路机械有限公司在吸收国外先进技术的基础上，自行开发设计、制造的具有国际先进水平的设备。该机主要用于高等级公路预防养护微表处和稀浆封层作业。该机以最优化的配置、先进的电液控制技术、科学的人性化设计，确保配比准确，操作简单。

Overview

Based on absorbing the advanced overseas technologies, MS9 slurry sealing machines are developed, designed, and manufactured by XRMC and have already reached the world advanced level. MS9 series are mainly used in the slurry sealing construction and microsurfacing treatment for preventatively maintaining the high grade road. This optimal configuration, advanced electric & hydraulic control technology and scientific humanized design etc. can guarantee accurate proportioning and simple operation.

发动机

采用道依茨BF4L914或东风康明斯4BTA3.9-C100，工作可靠、动力强劲。

Engine

DEUTZ BF4L914 or Dongfeng Cummins 4BTA3.9-C100 are reliable and powerful.

液压系统

Parker、伊顿、力士乐等知名液压元件构成的开式液压系统，结构紧凑，可靠性高。

Hydraulic system

Some famous brands of hydraulic elements such as Parker and Eaton etc. The open mode hydraulic system whose structure is compact and performance is reliable.

底盘

中国重汽斯太尔王（国IV）底盘或北方奔驰（国IV）底盘专为本机定做，低油耗，低排放，工作速度稳定，动力强劲，驾乘舒适便捷。

Chassis

The specially customized STEYR (China IV) chassis or North-Benz (China IV) chassis for this machine has some advantages such as low fuel consumption, low discharge, stable working speed, powerful driving force and comfortable & convenient operation.

沥青泵

TRI-ROTOR滑块式变量沥青泵可改变沥青流量，方便调整级配、生产率；带加热水套，保证低温下施工正常进行。

Bitumen pump

TRI-ROTOR shuttle-block type variable bitumen pump can change the bitumen flux and adjust proportion, productivity conveniently. Both of these two kinds of pumps are equipped with hot water covers to guarantee the correct construction in low temperature environment.

搅拌箱

双轴叶片式搅拌箱，有+5°~ -5°水平调整，保证在坡道上的拌和质量；耐磨叶片为硬质合金颗粒堆焊而成，可根据搅拌要求调节叶片角度。

Mixing box

The range of the horizontal adjustable of the twin shaft blade-type box is +5° ~ -5°. And mixing quality in slop is totally guaranteed. The wearable blades are made of cemented carbide material to prolong service life. The angle of blade can also be adjusted according to the mixing requirement.

控制计量

原装进口PLC程序控制器，可实现单键起停操作，操作简单；宝得数显流量计或玻璃管浮子流量计显示精确、一目了然。

Measurement control

PLC controller imported with the original packaging can be started and stopped with one-button, the operation is easy and reliable. The BURKERT digital-display flow-meter or the glass tube float flow-meter can accurately and clearly display the measurement result.

外观造型

骨料仓、乳化沥青箱和水箱，三位一体设计，美观大方，具有复合材料的乳化沥青箱和水箱，耐腐蚀，寿命长。

External appearance

The aggregate tank, emulsified bitumen tank and water tank are combined together. The appearance is good looking and decent. The emulsified bitumen tank and water tank are made of composite material to resist corrosion and prolong service life.

人性化设计

骨料仓左右两侧采用铝合金卷帘门，新颖独特；水、乳化沥青、添加剂均有自加载功能，加料方便快捷；具有路面喷水、高压清洗功能；创新的后置油门控制系统，彻底解决前后配合问题，保证施工质量。

Humanized design

The aluminum alloy roller-blind doors are equipped on the both sides of aggregate tank. Water, emulsified bitumen and additive can be added automatically, the feeding operation is convenient and quickly. The machine also has the functions of water spraying and high-pressure cleaning. The control system of postpositional pneumatic gasoline-throttle is designed innovatively to completely solve the problem of coordination between front and rear and guarantee the construction quality.





MS9乳化沥青稀浆封层车液体染料添加装置
荣获实用新型专利证书

MS9自行式路面材料铺撒设备后置油门控制装置
荣获实用新型专利证书

MS9乳化沥青稀浆封层车纤维添加装置
荣获实用新型专利证书

MS9乳化沥青稀浆封层车摊铺箱
荣获实用新型专利证书

MS9稀浆封层车车厢
外观设计专利证书

MS9车辙填补摊铺箱
荣获实用新型专利证书

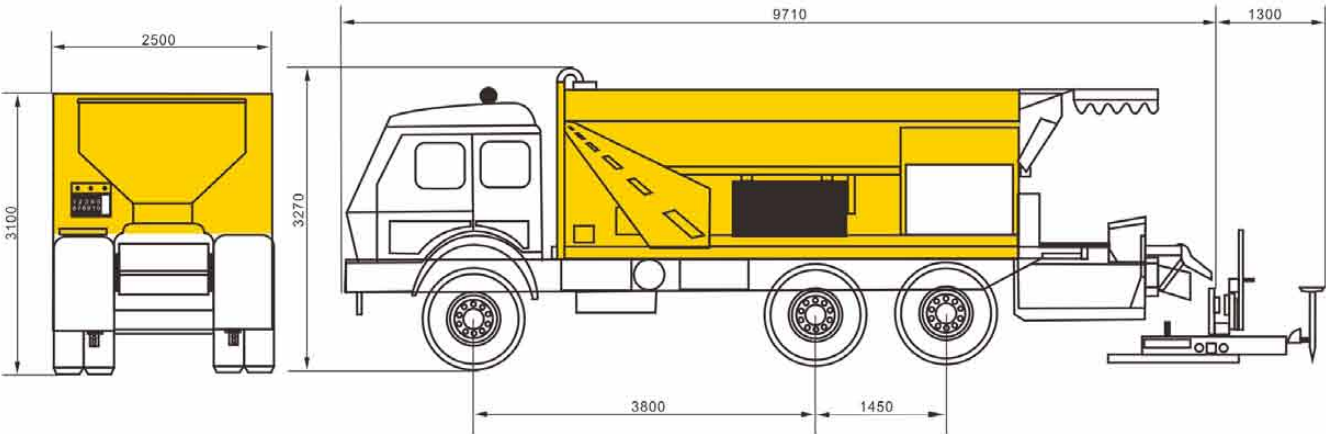
MS9系列稀浆封层车
荣获2005年度中交股份科学技术进步二等奖

MS9系列稀浆封层车
中国公路学会科学技术三等奖



外形尺寸图 External dimensions

尺寸单位:mm
Dimensional unit : mm



(车型不同, 尺寸略有变化, 图示尺寸仅供参考)

参数 Parameters

产品型号 Model		MS9	MS9B	MS9J	MS12
骨料仓容量（有玄板） Aggregate tank capacity	（ m ³ ）	9	9	9	12
乳化沥青箱容量 Emulsified bitumen tank capacity	（ l ）	2700	2700	2500	3000
水箱容量 Water tank capacity	（ l ）	3200	3200	2500	3000
细料仓容量（双仓） Filler silo capacity	（ m ³ ）	0.56	0.56	0.56	0.56
添加剂罐容量 Additive tank capacity	（ l ）	230	230	230	250
搅拌箱生产能力 Productivity of mixing box	（ kg / min ）	2500	2500	2500	2500
柴油机 Diesel engine	品牌 Brand	德国道依茨 German DEUTZ	东风康明斯 Dongfeng Cummins	一拖东方红 YTO	道依茨一汽（大连） Deutz FAW（ Dalian ）
	型号 Model	BF4L914风冷 BF4L913 air cooling	4BT3.9A-C100	LR4A3Z-G65	BF4M2012C
	功率/转速 （kw/ rpm） Power/rotate speed	74/2300	74/2400	74/2300	98/2300
标配/底盘 Standard configured chassis	品牌 Brand		中国重汽 SINOTRUK		中国重汽 SINOTRUK
	型号 Model		ZZ1257M3847D1		ZZ1317M3867D1
	发动机功率 Power of engine （kw）		221		221
	排放标准 Emission standard		国IV China IV		国IV China IV

中交西安筑路机械有限公司保留对技术改进的权利
XRMC RESERVES THE RIGHT OF TECHNOLOGICAL IMPROVEMENTS



高可靠性
High reliability

高生产率
High productivity

再生拌合两用机
Recycling and Mixing Machine

CR2500 冷再生拌合机 Cold Recycling Machine

概述

CR2500冷再生拌合机是中交西筑公司在吸收国内外再生机优点的基础上，自行开发生产的具有国际先进水平的产品。该设备的发动机、离合器、分动箱、铣削转子等均采用国外知名品牌厂家产品，技术先进，性能可靠，是公路养护及路基翻新的理想设备。

Overview

CR2500 cold recycling machine is the advanced product that is developed on the base of many advantages of foreign similar products by XRMC. The engine, clutches, transfer cases and milling rotors etc are all the famous brand products of foreign companies. Because of the advanced technology and reliable performance, CR2500 is one of the ideal machines for road maintenance and infrastructure renewing.

发动系统

为保证发动机的高效率及高可靠性，我公司选用康明斯KTA19发动机，水冷、增压、448 kW大功率发动机，确保了设备的高生产效率。

Engine system

In order to ensure the high efficiency, high reliability and high productivity, Cummins KTA19 engine is selected. The power of engine is 448kW, which features of water-cooling, super charging, high-power to ensure the high efficiency.

传动系统

发动机动力经过离合器、皮带轮、行星减速器传到铣削滚筒。铣削滚筒采用这种机械传动，大幅提升驱动效率。离合器、行星减速器均为原装进口，可靠性高。

Transmission system

The power of engine is transmitted through clutch, belt wheel and planet gear reducer to the milling roller. With this transmission method, the driving efficiency is increased obviously. The high reliable clutch and the planet gear reducer are all imported with original packaging.

铣削转子

铣削滚筒既能拌和又能铣削，CR2500冷再生拌合机铣削滚筒选用美国Kenlmitte滚筒。

Milling rotor

Milling rotor can cut and mix. The milling rotor of CR2500 is the product of famous Kenlmitte roller of the U.S.

转子罩壳

转子罩壳采用优质钢材加工，强度高，耐磨性好。转子罩壳与机架采用四个销子连接，安装拆卸方便。转子后门可以打开，更换刀具方便。

Rotor cover

The cover of rotor is made of good quality steel, so the intensity and wear resistance are good enough. Four pins are used to connect the cover and the machine frame, so the installation is conveniently. The back door can also be opened to facilitate changing cutters.

升降系统

本机机架及铣削转子的升降采用四个液压缸进行升降，其液压缸的密封件均选用进口密封件，保证其液压缸密封性。

Lifting system

The up and down of machine frame and milling rotor is implemented by four hydraulic cylinders. The imported sealing elements can ensure the airproof of hydraulic cylinder.

自动找平系统

自动找平是控制铣削深度与平整度的关键部件，本机选用德国进口MOBA自动找平控制仪，性能可靠，铣削后平整度高，便于深度控制。

Auto leveling system

Auto leveling system is the key component for controlling the mixing depth and smoothness. The imported MOBA auto leveling of Germany is selected with reliable performance. The depth is easy to control due to the high-smoothness after milling.

转向系统

本机前后轮均可以转向，从而实现主机前轮转向、后轮转向、前后轮共同转向及蟹形转向等四种转向方式。确保转向方便灵活，转弯半径小。

Turning system

The front and rear wheel can all perform turning operation, so there are four main turning modes can be realized to ensure the turning be flexible and convenient. The four turning modes are front-wheel turning, rear-wheel turning, front and rear wheel turning and crab-like turning etc.

行走系统

行走系统动力泵和马达都属原装进口；四轮驱动，驱动力大，进行铣削作业时不易打滑。行走速度有工作与行走两个档位，可以方便进行换挡。该机设有开关式差速锁，确保在艰难路况下也能均匀的工作。本机装有功率自动分配系统，可以根据发动机负荷自动调节行走速度，从而保证该机始终处于最大生产率状态。车轮总成内装有自动停车驱动器，刹车可靠。

Travelling system

Travelling system includes the imported pumps and motors with original packaging. Four-wheel driving can provide powerful travelling force so as to prevent the wheel-spin in milling operation. There are two kinds of speed including working speed and running speed, which can be switched easily. The on-off type differential lock ensures the even work in the difficult state. The auto power distributing system can automatically adjust the running speed according to engine load in order to keep the max productivity during working state. In addition, the auto-stop driver guarantees stable brake.

机架系统

本机架为优质高强度钢板焊接结构，机架两侧设置维护门，便于接近维护点；水箱、液压油箱、柴油箱为可拆卸的独立结构，便于维修；驾驶座椅可以旋转，便于操作。

Frame system

The machine frame is welded with the high strength steel plate. Two maintaining doors are installed beside the frame so as to facilitate maintenance. Water tank, hydraulic oil tank and diesel oil tank are all independent and detachable and are easy to maintain. The driver's seat can be moved to right and left for easy operation.

电器系统

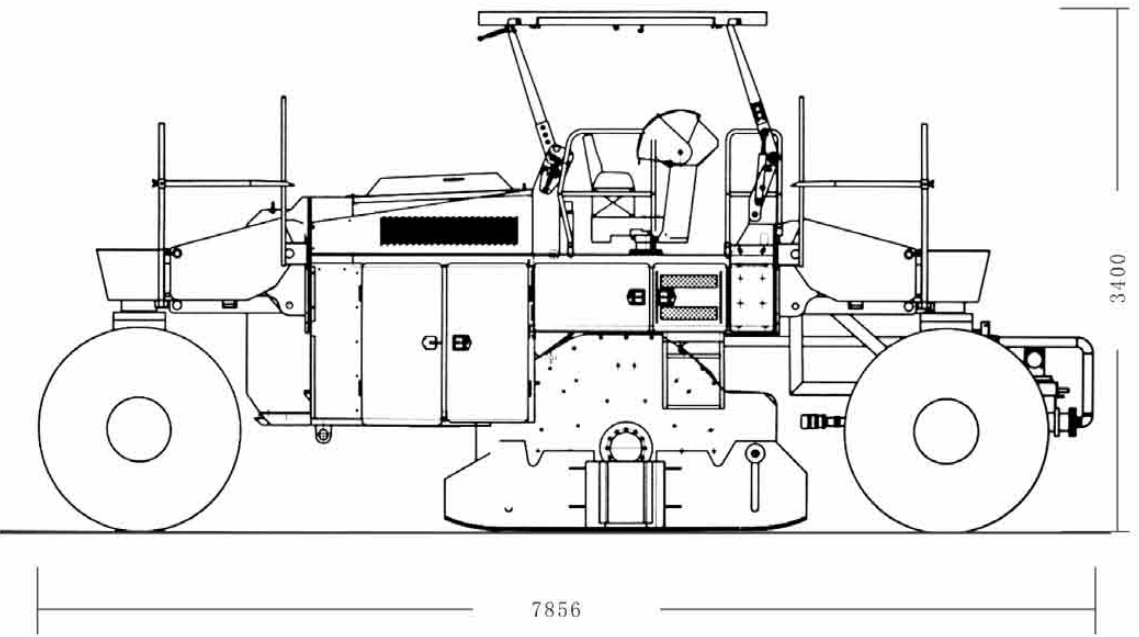
电器系统控制器选用国外散件，按钮、开关、继电器均为国外著名品牌，左右两边有两套相互独立的系统，操作方便。

Electric system

The elements of the electric system controller are all the imported famous brand products. There are two independent electric systems in the left side and the right side of CR2500, so the operation is very convenient.

外形尺寸图 External dimensions

尺寸单位:mm
Dimensional unit : mm



参数 Parameters

最大再生宽度 Max. regenerating width	(mm)	2438
铣削深度 Milling depth	(mm)	0-400
刀间距 Space between cutters	(mm)	15
刀具数 Cutter number		222
转子直径 (含刀具) Rotor diameter (including cutters)	(mm)	1270
发动机功率 Engine power	(kw)	448
冷却方式 Cooling method		water cooled 水冷式
气缸数 Cylinder number		6 缸
转速 Rotation rate	(r/min)	2100
行走速度 Running speed	(km/h)	0-10
工作速度 Working speed	(km/h)	0-4
理论爬坡能力 Theoretical gradeability		100%
离地间隙 Ground clearance	(mm)	490
质量 (非工作质量) Weight (non working)	(t)	27
车轮 Wheel		23.5-25
燃油箱 Fuel Tank	(l)	1000
液压油箱 Hydraulic oil Tank	(l)	190
水箱 Water tank	(l)	640
电气系统 Electrical system	(v)	24
主机尺寸 (l×w×h) Overall dimension	(mm)	7856×3000×3400

中交西安筑路机械有限公司保留对技术改进的权利
XRMC RESERVES THE RIGHT OF TECHNOLOGICAL IMPROVEMENTS



高可靠性
High reliability

高生产率
High productivity

再生拌合两用机
Recycling and Mixing Machine

CRS300 冷再生混合料搅拌设备
Cold Recycling Mixing Plant

CRS300冷再生混合料搅拌设备概述

CRS300系列冷再生混合料搅拌设备是西筑公司自主研发的一种新型筑养路施工设备,主要用于生产各种冷再生级配混合材料,是目前国内最先进的冷再生搅拌设备。也可用于水泥路基混合材料,石灰路基混合材料,水泥稳定砂石混合材料和其他有毒有害混合材料。

Brief introduction of crs300 cold recycling mixing plant

CRS300 Cold Recycling Mixing Plant is a new kind of road construction and maintaining machine researched and developed by XRMC. It is used to produce different grades of cold recycling mixture, and is the most advanced cold recycling mixing machine in China at present. CRS300 can also produce concrete roadbed mixture, lime roadbed mixture, concrete stabilized sandstone mixture and other venomous mixture.

CRS300冷再生混合料搅拌设备特点

易清理搅拌装置,先进的易清理搅拌技术操作简单可靠。(国家专利,专利号:ZL00209186.0)

独特的双搅拌结构,成品料质量更高更稳定。

2个粉料仓,差式计量,计量精确。

3个骨料仓,适用性强,电子皮带称量计量精度高。

自动缺料报警及料位检测装置。

供水、乳化沥青(泡沫沥青添加装置)采用高精度液体流量计量。

全自动化计算机界面控制。

模块结构,运输方便、安装快捷。

超规格骨料自动清理,使用更可靠。

Characteristics of crs300 cold recycling mixing plant

This machine can be cleaned easily, and the cleaning technology is convenient to operate.

Inimitable double mixing structure ensures higher quality and more stable mixed material.

Two filler silos, using weight gradient measuring and measurement is accurate.

Three aggregate silos, high applicability, electric belt measurement is accurate.

Auto-starving alarm and level detecting equipment.

Water, emulsified bitumen and foamed bitumen supplying devices are equipped with high-precision liquid flow meter.

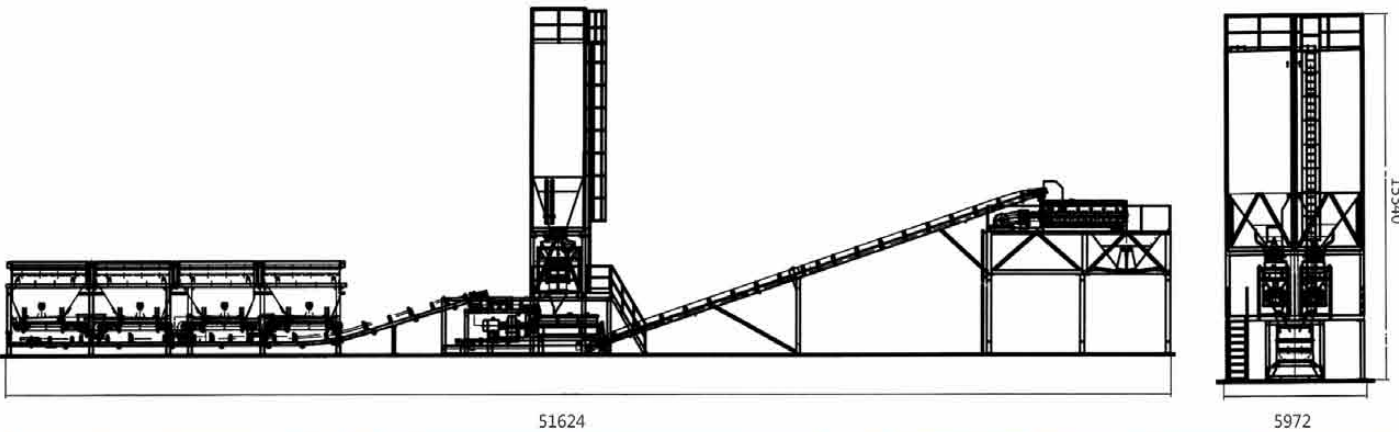
Full-automatic computer interface control.

Modular structure, convenient transfer and quick installation.

Over specification aggregate is cleared automatically which ensures stable working.

外形尺寸图 External dimensions

尺寸单位:mm
Dimensional unit : mm



参数 Parameters

产品型号 Model		CRS300
生产率 Productivity		300t/h (乳化沥青) 200t/h (泡沫沥青) 300t/h (Emulsified bitumen) 200t/h (Foaming bitumen)
骨料斗 (3) Aggregate hopper		12m³×3
粉料仓 (2) Filler silo		40m³×2
沥青罐 (非标) Bitumen tank (optional)		20-30 (t)
计量精度 Measuring Accuracy	骨料 Aggregate	±3%
	粉料 Filler	±0.2%
	水 Water	±0.5%
	沥青 Bitumen	±0.2%
	总装机容量 Total power	190 (kw)
	整机重量 Total weight	70 (t)
设备净占地面积 Net occupied area		44×5.8×16 (m²)

中交西安筑路机械有限公司保留对技术改进的权利
XRMC RESERVES THE RIGHT OF TECHNOLOGICAL IMPROVEMENTS



大容量骨料（双仓）
Big capacity aggregate bin (double bin)

计算机全程控制沥青精度
The precision of the bitumen and aggregate is controlled by remote computer.

TBS350 沥青碎石同步封层车 Macadam Sealing Machine

概述

TBS350沥青碎石同步封层车是中交西筑公司集国内外同类产品的优点，自行开发的具有当代先进水平的产品。整机采用模块形式，即沥青系统、骨料系统及喷洒装置模块化安装，维护简捷方便。控制系统采用电脑控制器，自动控制台安装在驾驶室内，手动操作台安装在车体的后部。该设备可进行公路路面的下封层、上封层施工；路面磨耗层施工；沥青路面（乡间路面）的铺筑（层铺法施工）；特殊工况下可进行沥青、碎石分别洒（撒）布。能够适应等级路面各种工况的预防性路面养护。

Overview

TBS350 synchronous macadam sealing machine is the advanced product that is developed by XRMC on the base of many advantages of foreign similar products. The Bitumen system, aggregate system and spraying have been modularized, and are easy to install and maintain. The control system uses pc-controller. The automatic control console is installed in the driver's cab and the manual console is installed behind the vehicle body. The machine can implement the up-layer sealing construction, under-layer sealing construction, wearing course construction, laying (layer spread method construction) of asphalt pavement (country road). In the special state, bitumen and macadam can be spread respectively. This machine is suitable for the preventive maintenance of different road surfaces in different conditions.

结构组成

该设备由底盘（含辅车架）、沥青罐（含导热油加热系统）、组合料斗、沥青循环系统、导热油循环系统、沥青喷洒装置、碎石撒布装置、液压系统、气动系统、控制系统组成。

Structure and composition

The machine is composed of chassis (including auxiliary vehicle frame), bitumen tank (including heating system of heat conducting oil), combined bins, bitumen cycle system, bitumen spreading device, macadam spreading device, hydraulic system, pneumatic system and control system etc.

底盘

采用陕汽德龙系列产品，发动机功率(345马力/1900rpm)，主要功能是承载工作装置并提供工作动力。

Chassis

Use the D'long series chassis of Shaanxi Automobile Group Co., Ltd. The engine power is 345horsepower/1900rpm.

沥青罐（含导热油加热系统）

热沥青储存保温。导热油加热系统提供沥青罐热能损耗的补偿，保证沥青罐、沥青管路和喷洒杆内的沥青始终保持在喷洒温度范围内，燃烧器燃油为轻质柴油。可选配双燃烧器加热系统。

Bitumen tank(including the hot-oil heating system)

bitumen tank is used for storing and keeping heat of bitumen. The hot-oil heating system is used for keeping asphalt temperature in bitumen tank, pipes and spreading pole. The fuel of burner is light diesel. Burner heating system is optional.

组合料仓

主要功能是储存碎石。当料仓中碎石材料低于设定料位时，油缸开始举升，转动料仓中的碎石注入碎石料门内，实现碎石料的不间断撒布。

The combined bin

The main function is to store macadam. When the macadam is less than present level, the cylinder will elevate and macadam in rotational bin will be sent into the macadam door to realize the continuous spreading.

沥青循环系统

通过液压马达驱动沥青泵，使沥青罐、沥青管路和喷洒杆内的沥青实现大、小循环，保证沥青洒布正常。

Bitumen system

Hydraulic motor drive the bitumen pump to let bitumen cycle within bitumen tank, pipe and spraying pole to ensure smooth spraying.

导热油循环系统

通过液压马达驱动导热油泵，为沥青罐、沥青管道及喷洒系统的保温升温 and 预热提供热能。

Hot-oil system

The hydraulic motor drives the hot-oil pump to provide heat for preheating and heating-preservation of bitumen tank, pipes and spreading system.

沥青喷洒系统

按照施工要求，设定沥青洒布量、设定宽度进行喷洒，沥青均匀的洒布在工作面上。

Asphalt spraying system

Set a specified amount of bitumen and evenly spread it on the working face according to the construction requirement.

碎石撒布系统

按照施工要求，设定碎石撒布量，撒布宽度，碎石均匀的铺设于工作面上。

Macadam spreading system

Spreading a given amount of macadam with different granularity on the working face in a specified width according to the construction requirement.

液压系统

液压系统通过驱动各功能部件的液压马达、液压缸以实现各种不同动作。

Hydraulic system

Hydraulic system can drive the hydraulic motors and cylinders in different components to implement different actions.

气动系统

储气罐存储压缩空气，通过气动控制元件驱动功能部件，以实现各种不同动作。

Pneumatic system

Air tank stores the compressed air which can drive the air-cylinders in different functional components to implement different actions through the pneumatic control system.



技术特点

- 1、计算机全程控制沥青洒布量、洒布精度，碎石撒布量、撒布精度，全程控制沥青、碎石同步洒（撒）布的联动。
- 2、控制系统采用模块集成元件，工作可靠，系统稳定，维护方便快捷，同时备份有完整的备用系统和手动操作系统。
- 3、独立的沥青加热保温系统，始终保证沥青在工作温度范围。
- 4、大容量双料仓（固定料仓 + 举升料仓）。
- 5、举升料仓的自动举升系统。
- 6、级配沥青流量的骨料料斗开度检测系统。
- 7、洒（撒）布过程观测系统（摄像观测装置监控）。
- 8、沥青自吸加入功能和溢出自排功能。
- 9、残留粘结材料的强制外排和自排功能。

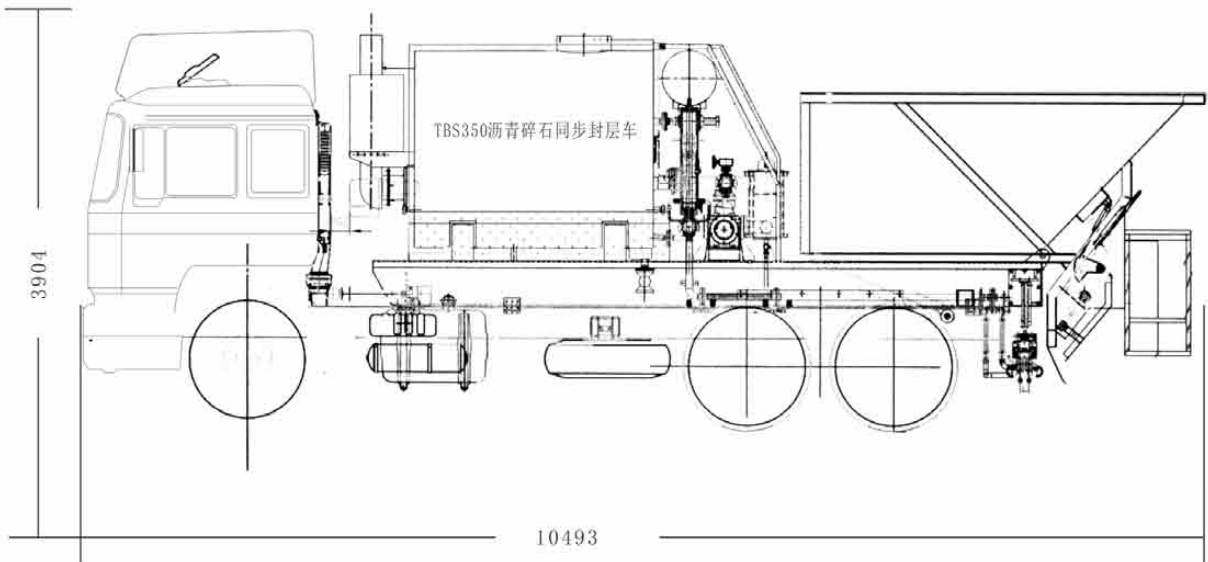
Technology features

- 1. The spreading quantity and accuracy of bitumen and macadam are controlled by computer during the whole working process which include the linkage of bitumen and macadam spreading.
- 2. The integrated modules are adopted in the control system to ensure the stable working and convenient maintenance. At the same time the backup system and the manual system are standby.
- 3. The independent heating and heat-reserving system of bitumen guarantees the steady working temperature scope of bitumen.
- 4. The big capacity double-bin (fixed bin and lifting bin).
- 5. The auto elevating system of the lifting bin.
- 6. The detecting system of the opening degree of aggregate gate can adapt to change of asphalt flux.
- 7. Spreading process monitor system (camera observing device) .
- 8. The self-absorbing function and the overflow self-draining function.
- 9. The compulsive removing function of remaining material.



外形尺寸图 External dimensions

尺寸单位:mm
Dimensional unit : mm



参数 Parameters

产品型号(附加玄板) Model		TBS350
洒（撒）布幅宽 Spreading width	(mm)	0-3500
沥青罐容积 Bitumen tank	(l)	6000
碎石料斗容积 Macadam hopper capacity	(m³)	10
加热功率 Thermal equivalent	(kw)	118.6-260.9
沥青洒布量 Bitumen application rate	(kg/m²)	0.5-3.0
碎石撒布量 Macadam application rate	(l/m²)	2-25
工作速度 Work speed	(km/h)	2.5-6
底盘型号 Chassis model		SX3255NR464
发动机功率 Engine power	(hp/rpm)	345/1900
最大总重量 Max total weight	(kg)	25000
外型尺寸 External dimension	(mm)	(长X宽X高)(LXWXH)10493X2500X3296(最高Highest3904)

中交西安筑路机械有限公司保留对技术改进的权利
XRMC RESERVES THE RIGHT OF TECHNOLOGICAL IMPROVEMENTS



独立的工作发动机
Independent engine

外置式导热油加热系统
External hot oil heating system

喷洒杆无级伸缩调节
No-stage extension spray bar

XLS12 橡胶沥青洒布车

Rubber asphalt distributor

概述

XLS12橡胶沥青洒布车是我公司研发的适合养护设备市场需求的新产品，可实现高粘度橡胶沥青洒布施工。该设备中采用了橡胶沥青的保温加热技术、防沉淀搅拌技术、高粘度沥青材料喷洒的压力控制技术和全自动智能控制技术等多项先进技术，特别是喷洒压力控制技术的应用填补了在沥青洒布车领域的国内空白。

Overview

XLS12 is a newly designed product by CCCC XRMC for road maintenance equipment market, which can satisfy the high viscosity asphalt distribution work. With several advanced technologies such as heat preservation, anti-sediment mixing, high viscosity asphalt spray pressure control and intelligent auto-control system etc., The high viscosity asphalt spray pressure control technology is one invention in China asphalt distributor industry.

喷洒系统

喷洒系统主要由主喷洒杆、伸缩喷洒杆、提升导向缸、喷洒杆伸缩机构及连接固定件等部件组成，主喷洒杆上安装24个喷嘴，左（右）伸缩喷洒杆各安装8个喷嘴。可选配折叠式喷洒系统。

Distributing system

The distributing system mainly consists of primary spray pole, extension spray pole, lift guide cylinder, extension devices of spray pole and other fixing parts. 24 nozzles are installed on the primary spray pole and 8 nozzles are fixed on both right and left sides of the extension spray pole. And foldable distributing system is also available.

底盘

底盘选用陕汽重卡（德龙SX1256DN464型自卸车底盘）：发动机选用CUMMINS(康明斯)国IV。最高行驶速度：v=63km/h

Chassis

Adopted Shaanxi Auto Mobile Group's SX1256DN464 as its chassis and CUMMINS ChinaIV diesel engine in the equipment which can reach the maximum speed of 63km/h.

液压系统

液压系统由三个串联泵加一个辅助泵和导热油循环泵马达、沥青泵马达、搅拌轴马达、喷洒杆升降和伸缩油缸组成。

Hydraulic system

Hydraulic system comprises three tandem pumps, and one assist pump, conducting oil cycle motor, bitumen motor, mixing shaft motor, spray extension elevating gear and telescopic oil cylinder.

控制系统

控制系统采用PLC编程控制器，全自动智能控制软件，触摸屏操作。操作及控制元件安装在驾驶室内，操作人员在驾驶室内完成所有的操作，系统界面可显示当前工作状态，根据需要可随时打印相应数据。

Control system

The control system adopted PLC, intelligent auto control software and touch screen control. All the control elements are equipped inner of the cab where operation could be finished and shows the working processes can be fully displayed on the system window or printed when needed.

沥青加热保温罐

沥青加热保温罐由罐体、导热油加热管（蛇形管）等部件组成，安装有沥青液位显示器、温度检测仪、安全阀、溢流管、排渣口等。

Asphalt heating and insulation tank

Asphalt heating and insulation tank consists of bitumen tank, conducting oil heating pipe (serpentuator) and other parts, which is equipped with bitumen level indicator, temperature detector, relief valves, overflow pipe, taper hole etc.

导热油加热系统

导热油加热系统由导热油炉、循环泵、循环管路组成。导热油炉选用无锡锡能生产的YYW-230Y（Q）专用锅炉，热容量20万大卡。

Hot oil heating system

Hot oil heating system consists of hot oil stove, circulation pump and circulation line. With heating capacity of 200,000 kcal, hot oil stove YYW-230Y is produced by WuXi Xineng.

工作发动机

工作发动机选用上海纽荷兰495AY柴油机（35kw/2000rpm）。

Working engine

495AY Diesel Engine (35kw/2000rpm) from Shanghai New Holland.

气路系统

气源由底盘提供，加装两个35升储气罐提供工作系统用气。

Pneumatic system

Air supply is provided by the chassis. Air for operation system is provided by two 35 liters added gas tanks.



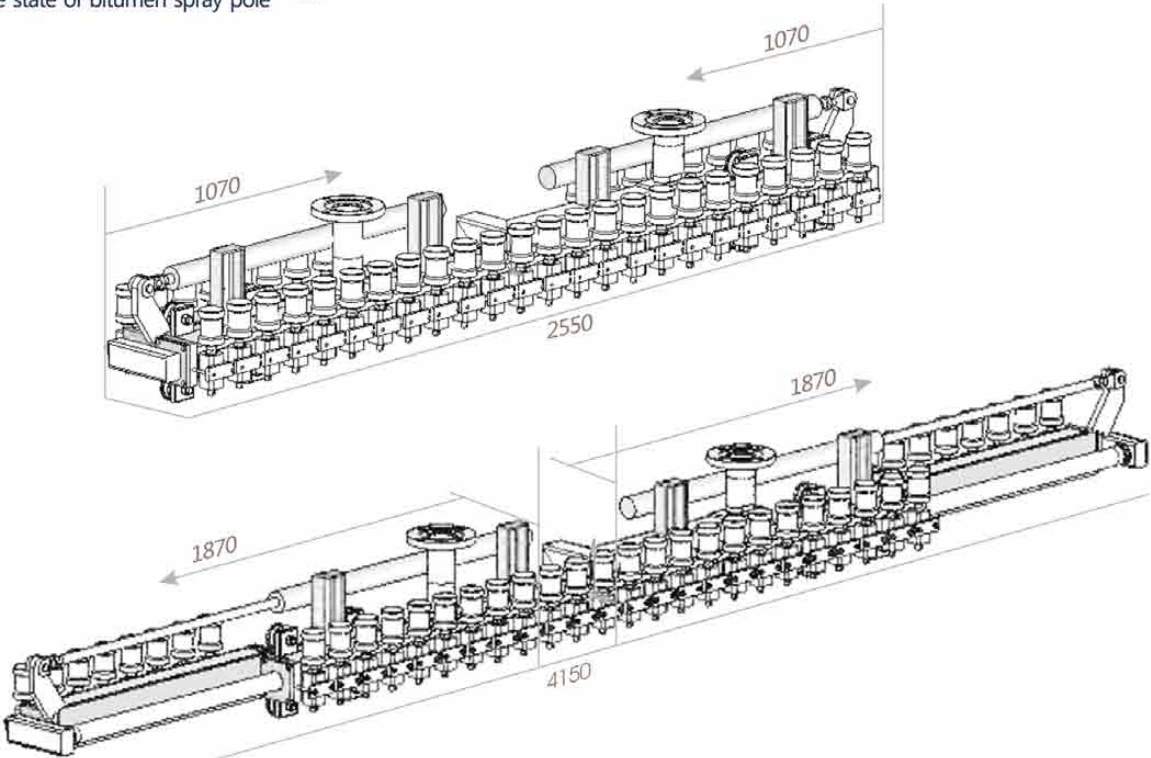
技术特点

- 1、智能型全程控制沥青洒布量、洒布精度。
- 2、控制系统采用模块集成元件，工作可靠、系统稳定、维护方便快捷。
- 3、外置式导热油加热炉，保证了系统的快速加热升温。
- 4、双控喷洒杆伸缩装置可实现喷洒基本宽度与最大宽度间的无级调节。
- 5、沥青喷洒杆高度自动调节装置（用户可选择安装）
- 6、沥青自吸加入和溢出自排功能。
- 7、残渣料的强制外排和自排功能。

Technology features

- 1. Intelligent auto-control distributing rate and precision
- 2. With the modular components, reliable operation, stable system and convenient maintenance could be achieved.
- 3. External hot oil heating stove ensures rapid heating of the system temperature.
- 4. With double-control retractor device of spray rod, infinitely adjustment control between basic spray width and maximum spray width could be achieved.
- 5. Height auto-adjustment device for spraying rod. (Optional)
- 6. Bitumen auto-feeding and auto-releasing function available.
- 7. Residue compulsory release and self-release function.

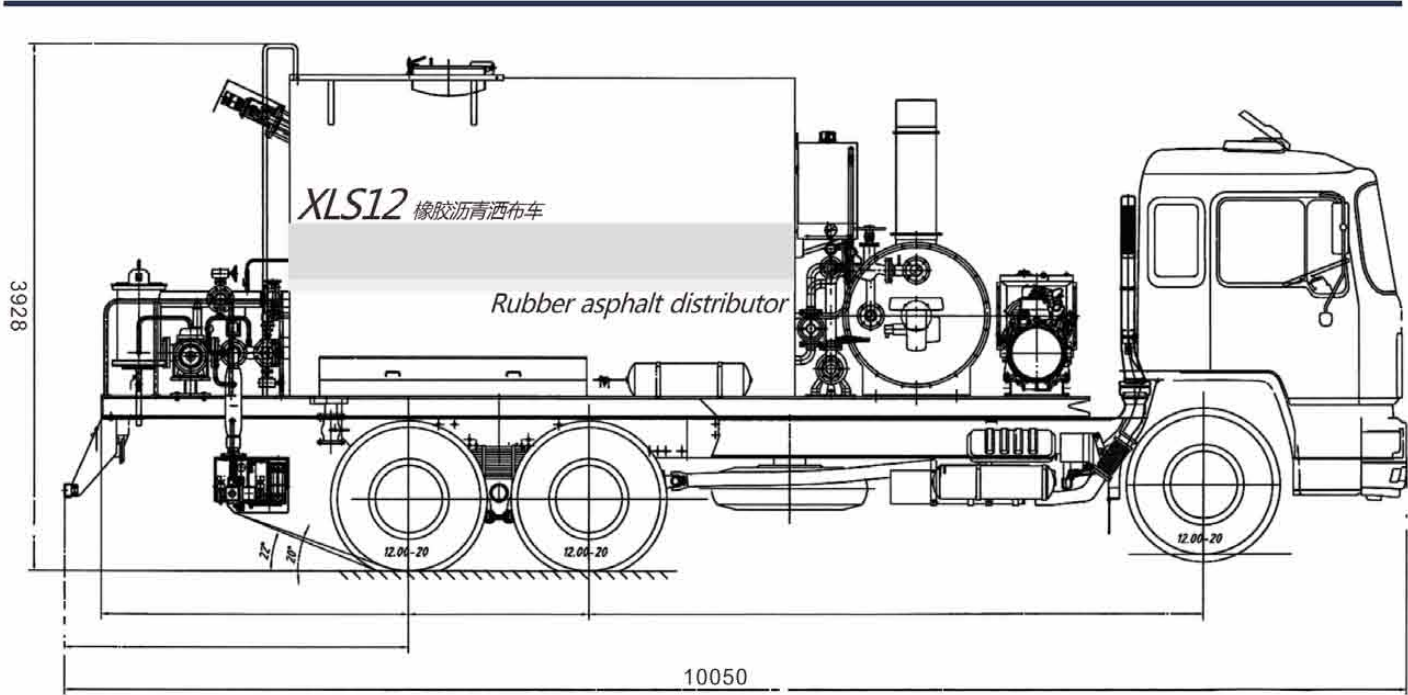
沥青喷洒杆收缩状态
Shrinkage state of bitumen spray pole



沥青喷洒杆展开状态
Spread state of bitumen spray pole

外形尺寸图 External dimension

尺寸单位:mm
Dimensional unit : mm



参数 Parameters

产品型号(附加玄板) Model	XLS12
行走方式 Traveling mode	汽车自行式 (陕汽德龙SX1256DR464型自卸车底盘) Truck Driven (Shaanxi Auto Mobile Delong SX1256DR464 Dumper Truck Chassis)
工作装置动力采用专用发动机 Power for equipment Private-use engine	上海纽荷兰SNH4100BY柴油机 (35kw/2000rpm) Shanghai New Holland SNH4100BY Diesel engine (35kw/2000rpm)
工作装置动力传动方式 Power transmission type	工作发动机 - 液压泵 - 各功能元件 Diesel Engine - Hydraulic pump - Function elements
沥青罐容积 Capacity of Bitumen Tank	(l) 12000
洒布介质 Distributing medium	橡胶 (改性) 沥青, 普通沥青、乳化沥青。 Modified rubber Bitumen; Normal Bitumen; emulsified Bitumen.
喷洒宽度 Distributing width	(mm) 4000
沥青喷洒量 Distributing rate	(l/m ²) 0.5 ~ 3.0
沥青加热方式 Bitumen heating mode	导热油加热(独立加热炉) Heating by conducting oil (independent heater)
洒布方式 Distributing mode	调压式 Pressure regulation
控制方式 Control mode	智能全自动 Intelligent auto-control system

中交西安筑路机械有限公司保留对技术改进的权利
XRMC RESERVES THE RIGHT OF TECHNOLOGICAL IMPROVEMENTS